

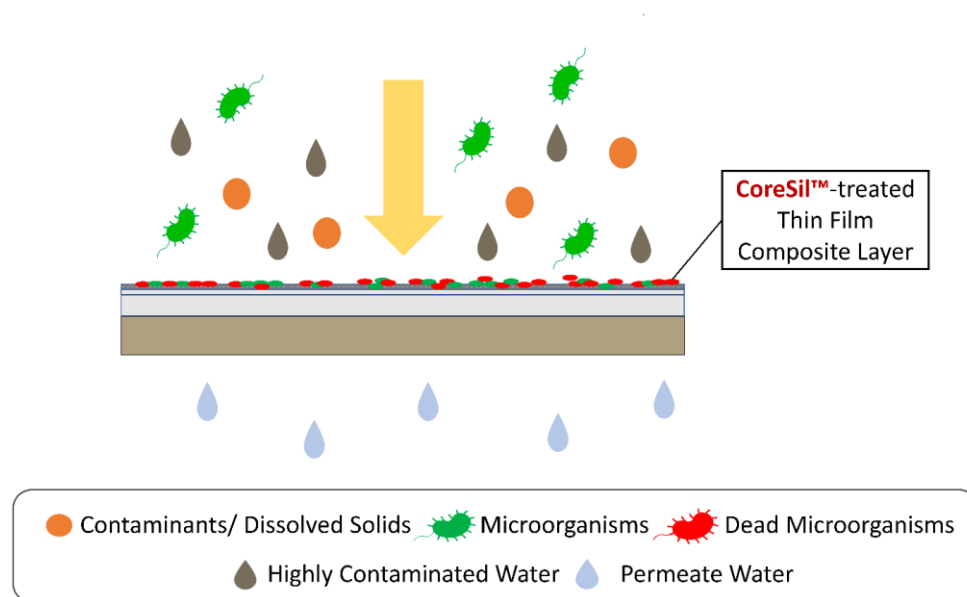


# CoreSil™ Anti-fouling Tape Wrapped RO

Advanced Brackish Water Membranes - 2521, 2540 & 4040

Cactus Materials reverse osmosis membranes incorporate innovative CoreSil™ anti-fouling technology to provide superior performance for a wide range of applications, including wastewater treatment and non-potable water reuse. The tape wrapped RO membranes with CoreSil™ technology delivers high-quality permeate while removing contaminants of concern at low operating pressures. The polyamide thin-film composite membranes with CoreSil™ technology are best suited for applications with challenging feed conditions of high biological fouling potential.

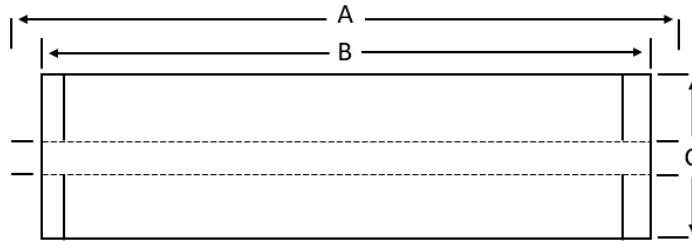
- ❖ Reduces fouling rates and thus cleaning frequency (up to > 60%).
- ❖ More effective restoration of nominal performance after cleaning.
- ❖ Up to 19% less energy consumption at the same water productivity.
- ❖ Suitable for a wide range of commercial and industrial applications and are available in standard sizes up to 4" diameter and 40" length.
- ❖ High-flow options for higher permeate production are also available and are indicated by "AHF" at the end of the part number.



## Biofouling Control with CoreSil™ Membrane Technology

Membrane Model	Permeate Flow Rate Range	A	B	C	Minimum Salt Rejection (%)
	gpd	Inches	Inches	Inches	
CS-T2521A	325	21	19	2.5	99.5
CS-T2521AHF	405				
CS-T2540A	1,000	40	38	2.5	
CS-T2540AHF	1,060				
CS-T4021A	900	21	19	3.9	
CS-T4021AHF	1,125				
CS-T4040A	2,400	40	38	3.9	
CS-T4040AHF	3,000				

**Test Conditions:** 2,000 ppm sodium chloride, 225 psi (1.6 MPa) applied pressure, 77°F (25°C) feed water temperature, pH 8 and the recovery listed in the table above. Element permeate flow may vary ± 20%.



Application Specifications	
Maximum Chlorine Concentration	< 0.1 ppm
Maximum Operating Pressure	300 psig
Maximum Operating Temperature	113 °F
Feed Water pH	2-11
Cleaning pH	1-12
Maximum Feed Water Turbidity	1 NTU
Maximum Feed Water SDI (15 min)	4-5
Maximum Pressure Drop	10-13 psig
Maximum Feed Flow, 2.5" Dia./ 4" Dia.	6 gpm/ 17 gpm

The information and data contained herein are deemed to be accurate and reliable and are offered in good faith but without guarantee of performance. Cactus Materials assumes no liability for results obtained or damages incurred through the application of the information contained herein. The customer is responsible for determining whether the products and information presented herein are appropriate for the customer's use and for ensuring that the customer's workplace and disposal practices comply with applicable laws and other governmental enactments. All data may change without prior notice due to technical modifications or production changes. Please consult the latest Cactus Materials, Inc. technical bulletin, design guidelines, and computer design program, or call an application specialist for the recommended design range. CoreSil™ is the Trademark of Cactus Materials, Inc. All rights reserved. © Cactus Materials, Inc.

Get to know us.

